

*Trusted for more than 35 Years*



Church Plaza®

America's Church Resource  
A Christian Workplace Company

**UPDATED FOR 2024**



America's leading provider of quality  
church seating , worship products and services.



*Trusted for more than 35 Years*

Endorsed by 47 national denominations, fellowships, ministries and/or their publishing houses and America's leading Church insurance company over the years.

Our Ministry is to Support Your Church.



### **ChurchPlaza's Pledge to You**

1. We will provide only the highest quality products and services at fair prices and with trustworthy warranties that can be relied upon to be there if needed.
2. If a problem occurs, ChurchPlaza will work to resolve it quickly and with minimum disruption to your church.
3. ChurchPlaza sales representatives will only speak the truth, speak only about ChurchPlaza products unless pointing out differences with other products and will not speak unflatteringly by name of a competitor.
4. ChurchPlaza will honestly promote and warrant our products without sales gimmicks, slick advertising or confusing offers.
5. ChurchPlaza representatives will try in all ways and at all time to be God honoring as we support your ministry.

Today, you have many choices in seating and other products and services for your church.

So, how do you separate the wheat from the chaff?

At ChurchPlaza, we've made the choices easier for you through our 3-Step Promise.

## 1. Quality!

You simply can't find better made or more trustworthy products and services than those we provide.

We carefully design, manufacture and select the finest products and services after meticulous research and testing. In most cases, these products and services are provided exclusively for ChurchPlaza and our exacting standards- standards that have been shaped through more than 35 years of experience as we assist more than 10,000 churches every year in their purchasing decisions.

## 2. Value!

Our combination of quality, low prices and trustworthy guarantees represents your best purchasing value.

We form long term, volume purchasing relationships with the finest manufacturers and services in the world while also eliminating their sales and marketing costs. The results are lower pricing and more benefits to the individual church than buying "direct." Because our only focus are churches and ministries, we know how to add valuable services and trustworthy guarantees that others won't or aren't able to provide the individual church.

## 3. Trust!

Our ministry is to support your church.

We have been owned and managed for more than 35 years by mature believers with a lifelong commitment to The Church. We are pledged to your well being. If problems occur, we will faithfully work to resolve them in a positive way while we strive to minimize distractions to your church.

At ChurchPlaza, you will always have peace of mind!



We provide your church with more than just quality products and services. We provide the very finest products and services...at the very best values...with helpful and knowledgeable consultants...and with guarantees you can trust. We provide your church with peace of mind. This is our ministry and our promise to you!

Dr. Thomas McElheny  
Founder  
ChurchPlaza



*Trusted for more than 35 Years*

## About ChurchPlaza

"ChurchPlaza was the first service provider endorsed and recommended to our **Willow Creek Association** members because of the **QUALITY, VALUE** and **TRUST** they provide our association members. These are people you can trust!"

*Jerry Butler*  
The Willow Creek Association

**C**hurchPlaza was formed to serve America's churches, church schools, ministries and related organizations as a trusted resource for quality products and services. **Over the years, 47 national denominations, fellowships, ministries and/or their publishing houses and America's leading provider of church insurance have endorsed and recommended ChurchPlaza to their members and churches.**

By bringing together the purchasing power of tens of thousands of churches, ChurchPlaza creates advantages in pricing, selection, service and guarantees that are simply not available to an individual church. Serving churches and ministries is our calling and our only business!

Most products and services are designed and manufactured specifically for ChurchPlaza. We eliminate the need for manufacturers and providers to incur marketing and selling cost to access the Faith Markets and we are able to provide churches with better than "direct" pricing.

In over 500,000 transactions over the past 35 years we have never been sued nor sued anyone else, failed to deliver a paid for product or service nor had any complaints of any kind filed with any denominational, governmental or oversight authority about our business practices.

Compare our values and exceptional quality, then add in the benefits of our trained sales consultants, warranties you can trust, our heart and history for ministry and you can see why ChurchPlaza represents your church's best purchasing value!

## Contents

Sanctuary and Church Seating.....	4
Quality Fabric Collection .....	11
Extensive Commercial Testing .....	12
Features and Accessories.....	13
Quality Folding Chairs .....	17
Quality Folding Tables .....	18
Best Value Pulpits and Lecterns .....	19
Pulpit Furniture .....	20
Financing Services .....	21



The highest quality products and services available anywhere, at exceptional values and from people you can trust. That's ChurchPlaza!

Why would you go anywhere else?

*Trusted for more than 35 Years*



# Simply the Best Built, Best Value and Most Comfortable Church Seating Available Anywhere!

Jubilee  
page 4



Quick Ship Jericho Pew Chair  
page 5



Jericho Pew Chair  
page 6



**For more than 35 years ChurchPlaza** has been the definable standard for quality church and sanctuary seating in America. That is why 47 national denominations, fellowships, ministries and/or their publishing houses have recommended ChurchPlaza to their churches. *No other provider has received even one endorsement!*

**Church Plaza Seating provides** more standard steel, virgin foam, Stafast™ T-Nut fasteners, solid wood foundations, the highest grade commercial fabrics, upgraded features and well thought-out ergonomic designs in our seating products than any other provider of church seating.

Our value pricing, trustworthy warranties, knowledgeable consultants and commitment to you will always provide great stewardship opportunities for your Church or Ministry!

***Quality and Value You Can Trust!  
Why would you go anywhere else?***

Genesis Pew Chair  
page 7



Arm Chair Series  
page 8



Harmony Chair  
page 9



Banquet Chair  
page 10



*Trusted for more than 35 Years*

# Jubilee™ Church Chair

**MoistureBarrier Fabric Treatment to protect your chairs from spills and accidents now INCLUDED AT NO ADDITIONAL COST ON ALL OF OUR FABRIC CHOICES.**

## QUALITY YOU CAN TRUST! SAFETY YOU CAN MEASURE!

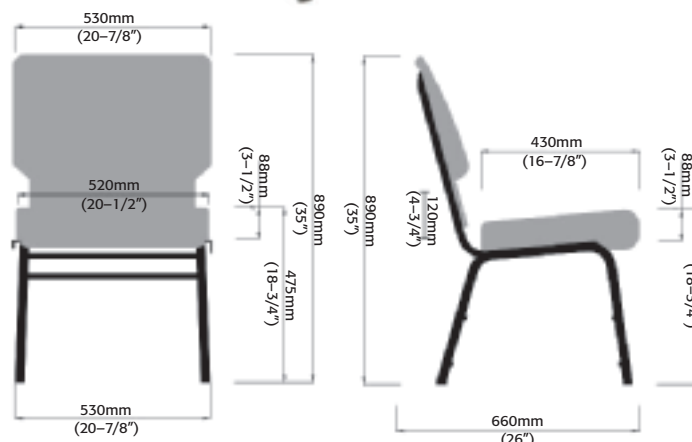
- Chairs ship fully assembled
- Functional Field Installed Bookrack available
- 16-gauge lower and 18-gauge upper quality power coated welded steel frame with durable multi-surface glides, welded ganging devices and comprehensive 10 year frame warranty.
- Highly comfortable seats are thickly padded with quality 100% 10 year warranted commercial grade all virgin foam.
- Real industrial grade plywood with 10 year warranted seat and back foundations (not weaker imitation wood substitute).
- T-Nut fasteners securing seats and back to frame (not the weaker wood screws).
- Quality certified long wearing commercial grade fabrics exceeds CAL 117 requirements.
- Dual lumbar back support usually found only on much more expensive chairs.
- Peace of mind knowing we are *owned and managed by a family* that has faithfully served America's Churches for more than 35 years and in the process earned the endorsements and recommendations of 47 national Denominations and Ministries.
- Available in limited colors only.
- Please contact our representatives for more information.



## Quality You Can Count On!

Our church chairs are manufactured to exacting standards using only quality raw materials and components for years of satisfactory performance.

**Our Jubilee™ Church Chair is a quality built, very comfortable and durable alternative for higher priced substitutes. Dollar for dollar, this is America's best value-priced Church Chair!**



**Call today for your free sample chair.**



*Trusted for more than 35 Years*



# Quick Ship Jericho™ Pew Chair



The  
*Best Value*  
Series

Available with  
cutaway welded  
bookrack as shown

**The Jericho™ is America's value priced quality built sanctuary chair with all the comfort, durability and features you would expect on much more expensive seating!**

The Jericho's 100% virgin foam with 3" seat, generous rolled front for additional leg support provides comfort and exceptional long term wear. Our certified highest grade commercial fabric is warranted to be stain resistant and to provide years



Quick Ship available in  
the following colors:

Fabric Color	Fabric Number
Black Marble	943
Cobalt	912
Black	520
Fossil	944
Grey Heather	521
Indigo	436
Maroon	582
Walnut	918
Khaki	940

To view fabric  
please refer  
to Page 11.

**MoistureBarrier Fabric Treatment to protect your chairs from spills and accidents now INCLUDED AT NO ADDITIONAL COST ON ALL OF OUR POPULAR FABRIC CHOICES.**

## QUALITY YOU CAN TRUST! SAFETY YOU CAN MEASURE!

- MAS certified, safe and true components .
- Heavy duty true 1", 16 gauge 1010 cold-rolled steel frame foundation with 9/16 inch cross members, 1 inch weld lines and mandrel bends will support 1700 lbs. This is truly the strongest frame manufactured for sanctuary seating!
- Real industrial grade 1/2 inch CARB 2 Certified plywood foundation and seatbacks are stronger and stiffer with superior holding power than particle board, strand board or imitation plywood (Multi-Ply/OSB) as reported by Georgia-Pacific Building Products.
- StaFast™ Steel-to-Steel never slip fastening systems test with 5X more holding power than wood screws and stronger than BOS Steel to plastic fastening system and never work loose.
- ChurchPlaza fabrics are certified among the highest quality commercial fabrics available with longer wear, durability and MoistureBarrier treatment at no additional cost.
- All chair fabrics laboratory certified in compliance with JIS 112, The Oeko-Tex 100 and American Textile Restricted Substances List regarding formaldehyde emissions.
- High density 100% 3" dual density virgin commercial grade Foam seat cushion with plush rolled front and a full seat for roomy comfort and leg support.
- Quality chip resistant eight step electrostatic powder coating frame finishes for a lifetime of beauty.
- Full 20 .5" seat cushion width.
- The ChurchPlaza Trustworthy product warranty for your peace of mind.

**Call today for your free sample chair.**



*Trusted for more than 35 Years*

# Jericho™ Pew Chair

**MoistureBarrier Fabric Treatment to protect your chairs from spills and accidents now INCLUDED AT NO ADDITIONAL COST ON ALL OF OUR FABRIC CHOICES.**

## QUALITY YOU CAN TRUST! SAFETY YOU CAN MEASURE!

- MAS certified, safe and true components.
- Heavy duty true 1", 16 gauge 1010 cold-rolled steel frame foundation with 9/16 inch cross members, 1 inch weld lines and mandrel bends will support 1700 lbs. This is truly the strongest frame manufactured for sanctuary seating!
- Real Industrial Grade ½ inch CARB 2 Certified plywood foundation and seatbacks are stronger and stiffer with superior holding power than particle board, strand board or imitation plywood (Multi-Ply/OSB) as reported by Georgia-Pacific Building Products.
- StaFast™ Steel-to-Steel never slip fastening systems test with 5X more holding power than wood screws and stronger than BOS Steel to plastic fastening system and never work loose.
- ChurchPlaza fabrics are certified among the highest quality commercial fabrics available with longer wear, durability and MoistureBarrier treatment at no additional cost.
- All chair fabrics laboratory certified in compliance with JIS 112, The Oeko-Tex 100 and American Textile Restricted Substances List regarding formaldehyde emissions.
- High Density 100% 3" dual density virgin Commercial Grade Foam seat cushion with plush rolled front and a full seat for roomy comfort and leg support.
- Quality chip resistant eight step electrostatic powder coating frame finishes for a lifetime of beauty.
- A large selection of fabrics and frame colors to choose from. Full 20.5" seat cushion width.
- The ChurchPlaza trustworthy product warranty for your peace of mind.
- Contact our Representatives to order a FREE fabric card.



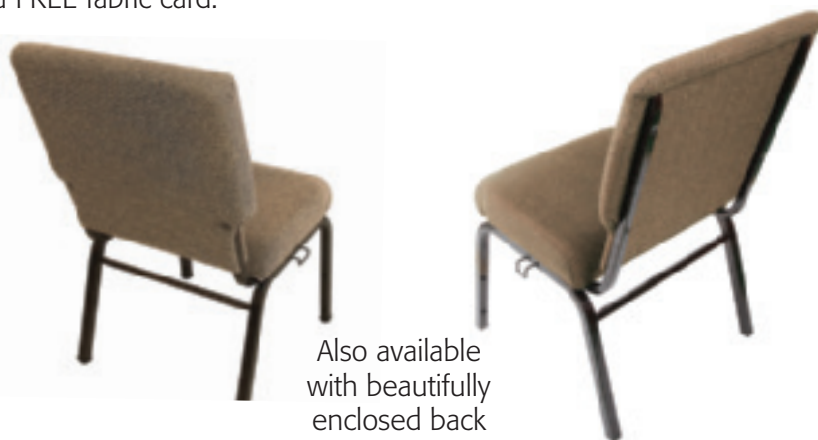
The  
*Best Value*  
Series

Custom order  
with or without  
welded bookrack.

Available with  
cutaway as shown

**The Jericho™ is America's value priced quality built sanctuary chair with all the comfort, durability and features you would expect on much more expensive seating!**

As with all our worship seating the Jericho features 100% virgin foam with 3" seat, generous rolled front for additional leg support provides comfort and exceptional long term wear. Our certified highest grade commercial fabric is warranted to be stain resistant and to provide years of durability and good looks. The ergonomically designed dual lumbar support of the back adds to the comfort and value of this extraordinary chair. Contact our representatives to order a FREE fabric card.



Also available  
with beautifully  
enclosed back

**Your church members will be pleased with the comfort, quality, durability and value of the Jericho Chair!**

**Call today for your free sample chair.**



*Trusted for more than 35 Years*



## Genesis™ Pew Chair



*Value Priced  
and Certified for  
Safety*

Generous Full 20.5" Width with Deep 17.5" Seat Depth for  
Exceptional Roominess and Comfort.

**Extraordinary Roomy Comfort, Durability, Style and  
Value describe our Genesis Pew Chair.**

With contemporary styling, 3½ inch of dual layer virgin foam  
support and thickly rolled front for extra comfort, the Genesis  
Pew Chair provides exceptional roominess and comfort with  
continuous pew like surface seating when ganged with other  
Genesis Chairs.



Available  
with open or  
enclosed back

**MoistureBarrier Fabric Treatment  
to protect your chairs from spills  
and accidents now INCLUDED AT  
NO ADDITIONAL COST ON ALL OF  
OUR FABRIC CHOICES.**

- MAS certified, safe and true components.
- Continuous pew like seating surface when ganged together.
- ChurchPlaza was the first worship seating provider to test and certify our worship chairs components for TrustWorthy safety to protect your health and well being.
- Quality industrial grade plywood foundations are CARB 2 certified, safe from cancer causing formaldehyde emissions and compliant with US Composite Wood Products Act.
- All foam is certified free from formaldehyde and certified to have non-detectable levels of emission levels from TDCPP (known cancer causing agent used in some fire retardants) and in compliance with California Proposition 65.
- All chair fabric is laboratory certified in compliance with JIS 112, The Oeko-Tex100 and American Textile Restricted Substances List regarding formaldehyde emissions.
- StaFast™ Steel-to-Steel, never slip fastening systems, test at 5X more holding power than wood screws and are stronger than BOS Steel to plastic fastening system.
- ChurchPlaza fabrics are certified among the highest quality commercial fabrics available with longer wear, durability and MoistureBarrier treatment at no additional cost.
- Contact our representatives to order a FREE fabric card.
- Highest quality chip resistant eight step electrostatic powder coating frame finishes for a lifetime of beauty.
- The industry leading ChurchPlaza trustworthy product warranty for your peace of mind.

**Call today for your free sample chair.**



*Trusted for more than 35 Years*

# Arm Chair Series

**MoistureBarrier Fabric Treatment to protect your chairs from spills and accidents INCLUDED AT NO ADDITIONAL COST ON ALL OF OUR STANDARD FABRIC CHOICES.**

## QUALITY YOU CAN TRUST!

- Heavy duty true 1 inch/16 gauge 1010 cold-rolled steel frame foundation with 9/16 inch cross members, 1 inch weld lines and mandrel bends will support 1700 lbs. This is truly the strongest frame manufactured for sanctuary seating!
- Real industrial grade ½ inch plywood foundation and seatback is stronger and stiffer with superior holding power than particle board, strand board or imitation plywood (Multi-Ply/OSB) as reported by Georgia-Pacific Building Products.
- StaFast™ Steel-to-Steel never slip fastening systems test with 5X more holding power than wood screws and stronger than BOS Steel to plastic fastening system and never work loose.
- ChurchPlaza fabrics are certified among the highest quality commercial fabrics available with longer wear, color fastness and durability and MoistureBarrier treatment at no additional cost.
- High density 100% 3 inch virgin commercial grade foam seat cushion with plush rolled front and full 20.5 cushion width.
- Highest quality chip resistant eight-step electrostatic powder coating frame finishes for a lifetime of beauty.
- A large selection of fabrics and frame colors to choose from.
- Contact our representatives to order a FREE Fabric Card.
- The ChurchPlaza trustworthy product warranty for your peace of mind.



The  
*Best Value*  
Arm Chair Series

This affordable arm chair is designed for compatibility with our Jericho and Genesis Pew Chair



Available  
with open or  
enclosed back



**Call today for your free sample chair.**



*Trusted for more than 35 Years*



# Best Multi-function Chair

## at Exceptional Pricing



The  
*Best Value*  
Series

### Versatility and Comfort at a Very Attractive Price

A pleasing combination of real comfort and functionality that is at home in both the sanctuary AND the banquet hall. The extra width and foam makes this chair the perfect mix (Harmony) between banquet/fellowship chairs and sanctuary chairs. Use it in either or both with our unique interlocking "ganging" system. Adult classrooms will also love its practical good looks and comfort. Available with or without ganging device and/or welded bookracks.

## Harmony™ Chair

**MoistureBarrier Fabric Treatment to protect your chairs from spills and accidents INCLUDED AT NO ADDITIONAL COST ON ALL OF OUR STANDARD FABRIC CHOICES.**

### QUALITY YOU CAN TRUST!

- MAS certified, safe and true components.
- Generous 3" dual layer 18½" wide virgin foam seat for lasting comfort.
- 5-ply ½" industrial grade CARB 2 plywood seat and back base is stronger and more reliable than particle board or manufactured plywood.
- ChurchPlaza fabrics are certified among the highest quality commercial fabrics available with longer wear, durability and MoistureBarrier treatment at no additional cost.
- Contact our representatives to order your FREE fabric card.
- Chair comes standard with foam added lumbar support.
- Select with or without gangers and/or welded bookracks.
- Upgraded, self-leveling floor glides ensure level, non-rocking stance.
- Handhold built into the back for easy moving and stacking.
- Stafast™ steel-to-steel fastening system.

Call today for your free sample chair.



*Trusted for more than 35 Years*

# Best Value Banquet Chair

at Exceptional Pricing

## Banquet Chair

**MoistureBarrier Fabric Treatment to protect your chairs from spills and accidents INCLUDED AT NO ADDITIONAL COST ON ALL OF OUR STANDARD FABRIC CHOICES.**

### QUALITY YOU CAN TRUST!

- MAS certified, safe and true components.
- Heavy duty 13/16" square 18 gauge 1010 cold-rolled steel frame.
- Stack bars are standard and protect the seat cushion when stacking.
- Handholds built into the back for easy moving and stacking.
- Generous 2.5" high density virgin foam seat for lasting comfort.
- Foam and fabrics meet the California Bulletin 117 specs for flame resistance.
- Upgraded self-leveling floor glides insure level non-rocking stance.
- Now available with MoistureBarrier Fabric to protect your chairs from spills and accidents.
- Highest quality chip resistant eight step electrostatic powder coating.
- Large selection of fabric frames and colors.
- Contact our representatives to order your FREE fabric card.



America's best value in durable and comfortable multi-use stacking chairs for classrooms or fellowship/banquet halls.

*Elegantly finished backs with no screws or metal tabs showing*



Deluxe  
Banquet Chair

**Call today for your free sample chair.**



*Trusted for more than 35 Years*



# Quality Fabric Collection

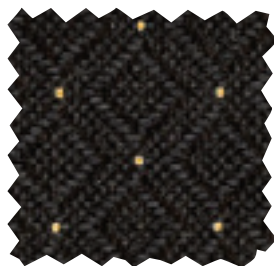
ChurchPlaza fabrics are among the highest quality commercial fabrics available and certified for safety, wearability, color fastness and durability with MoistureBarrier protection added at no additional cost. Many fabric choices to match any décor.

## IMPORTANT

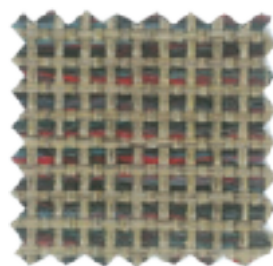
Due to slight variations in digital and printing presentation, colors may vary slightly. Before final selection speak with one of our representatives and order your FREE fabric card.



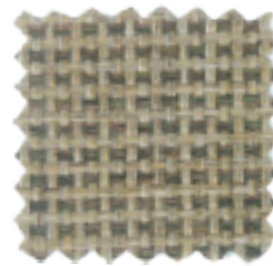
ESPRESSO - 629



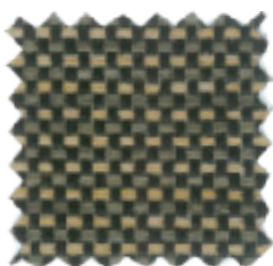
WALNUT - 918



HAZELNUT - 902



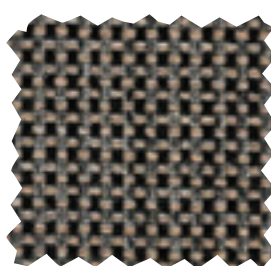
KHAKI - 940



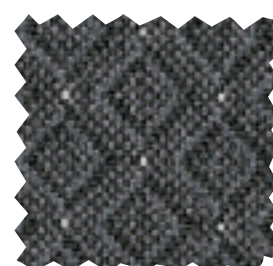
HOPSACK - 941



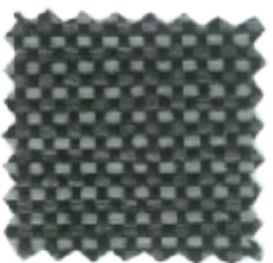
BLACK - 520



FOSSIL - 944



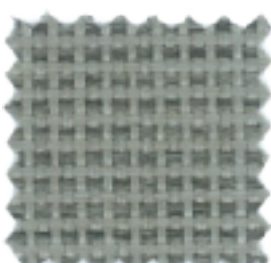
GRAPHITE - 948



BLACK MARBLE - 943



GREY HEATHER - 521



GREY MIX - 622



MAROON - 582



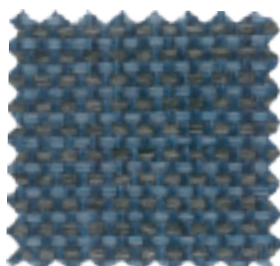
AUBURN - 911



COBALT - 912



INDIGO - 436



STEEL BLUE - 395



VIOLA - 853



PLUM - 947

ALL CHURCHPLAZA FABRIC SELECTIONS COME UPGRADED WITH MOISTURE BARRIER FABRIC  
ALL FABRICS EXCEED 130,000 DOUBLE-RUB WYZENBEEK ABRASION TEST



*Trusted for more than 35 Years*

# Extensive Commercial Testing

Following extensive testing by an internationally recognized United States based commercial testing laboratory, be it known that ChurchPlaza worship seating (models Jericho, Genesis, Harmony and Banquet Chairs) and in accordance with ANSI/BIFMA e-3-2014 furniture sustainability standard, ChurchPlaza's worship seating is compliant with ANSI/BIFMA e3-2014 furniture sustainability standards section 7.6 established for seating to be classified as low-emitting furniture.

The chairs were also found to be compliant with California Department of Public Health (CDPH) freestanding criteria, LEED v4 and CHPS criteria. Qualified project uses of these chairs may be eligible for ANSI/BIFMA e3-2014, LEED and CHPS criteria.

By successful compliance with these standards, the chairs also meet the criteria of MAS Certified Green.



Please obtain the following assurances **in writing** from any church seating provider your church may be speaking with **or don't buy their chairs!**

1. That all plywood or pressboard seat/back foundations used in their chairs are certified to be in compliance with CARB Phase 2 (California Air Resources Board) AND The Formaldehyde Standards for Composite Wood Products Act (signed July 7, 2010).....both establishing formaldehyde emissions limits for indoor plywood and press board products. Failure to do so may expose your congregation to dangerous levels of carcinogenic chemical fumes.
2. That all foam used in the chair is laboratory certified to have non-detectable emission levels of TDCPP (a known carcinogen present in many commercial flame retardants) AND the foam used in the chairs is laboratory certified to be free from formaldehyde.
3. That the chair fabric has been laboratory certified to be in compliance with international free formaldehyde standards contained in JIS 112 and The European Oeko-Tex100 and American textile Restricted Substances List.
4. To further protect your church, insist the chair provider warrant IN WRITING; 1) That ALL (100%) foam used in the chair is VIRGIN, high density commercial grade foam 2) That ALL (100%) of the foundation fasteners are high quality steel to steel T-nut fasteners and 3) That all fabric wear, durability and fabric characteristics claims be certified by the fabric manufacturer and 4) That all paints used meet applicable regulations.

Effective 4/8/13

# Features & Accessories

## The World's Highest Quality Church Seating.

### Strongest Frames

Always high tensile strength quality 1010 carbon steel. Our sanctuary chairs use TRUE 1 inch 16 gauge steel (not the weaker 18 gauge) with true mandrel bends with full 1 inch welds and 5/8 inch crossbars for foundations that will support over 1700 lbs and last a Lifetime.



### Chair Ganging

Our QuickRelease and retractable interlocking chair systems will satisfy building and/or fire code requirements. Easy, convenient and safe to use.



### Durable Foundations

Our seat and back foundations are industrial quality 1/2" CARB 2 certified plywood (never imitation plywood such as OSB, Strandboard or Multi-Ply) or Space age PolymerTough™ lightweight for superior strength and holding power. Our wood foundations are certified for safety from cancer-causing formaldehyde emissions.

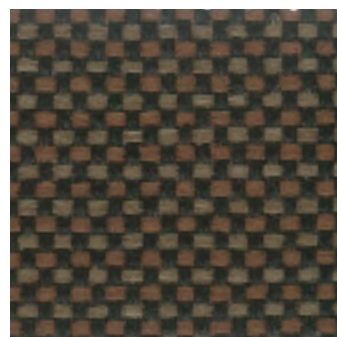


### Stafast™ Fastening Systems

ChurchPlaza introduced "T"-Nut construction to the church seating market! We exclusively use Stafast™ steel-to-steel non-slip T-Nuts to hold our real plywood seat and back foundations to the world's strongest church chair frames. Provides 5X the holding power of wood screws and more holding power than BOS Steel-to-plastic fastening system.

### Quality Fabrics

ChurchPlaza fabrics are among the highest quality commercial fabrics available and certified for safety, wearability, color fastness and durability with MoistureBarrier protection added at no additional cost. Many fabric choices to match any décor.



Espresso



Khaki

*Trusted for more than 35 Years*



**Simply the Best Built, Best Value and Most Comfortable Church Seating Available Anywhere!**



### **Welded Bookrack/Holder**

Factory installed and painted in the frame color of the chair installation. Designed to hold communion cup, Bible, Hymnal and Devices.



### **Stack Buttons**

Multiple stack buttons have positive tight fit to stay in place and protect the legs from marring during stacking.



### **Wheeled Carts**

2 wheeled cart for unloading and moving chair stacks into your facility; extra wide 24" toe plate covers the width of the chair and chair base. 3 wheeled cart (CP013-KD) accommodates up to 10 chairs for the ease of transporting chairs to storage within your facility.



### **Dual Layer Foam**

ChurchPlaza introduced the first dual layer foam chairs to the Worship Market in 1989 and we have continued to perfect the additional comfort of combining a firmer virgin underfoam with a softer virgin top foam.



### **Floor Glides**

We offer 4 quality floor glides depending on the specific chair model.



### **Card Pockets**

Factory sewn fabric card pocket or plastic card pocket including hardware to be installed by customer.

*Trusted for more than 35 Years*

# ChurchPlaza Chairs are built to last!

## **MAS Certified Safe Chair Components**



ChurchPlaza is the first worship chair provider to laboratory certify all chair components safe and in compliance with applicable International, US, State and Industry standards for emissions from toxic cancer causing chemicals including formaldehyde and TDCPP. All wood foundations used are certified CARB 2 and compliant with US Standards for Composite Wood Products Act. All chair foam is free from formaldehyde and with non-detectable levels of TDCPP and compliant with California Proposition 65. Chair fabric has been laboratory certified in compliance with JIS112, European Oeko-Tex100 and American Restricted Substances List.

## **The Frame is the Strength of the Design**

Once you have the opportunity to try one of our ChurchPlaza chairs, you'll know why these chairs are built to last. When you first sit down, you'll immediately feel frames that were designed to support you forever. As you examine the construction of the frame and see the quality of the workmanship, you'll understand why we extend a LIFETIME frame warranty.

## **Heavy Duty Steel**

ChurchPlaza frames are designed to be maintenance free and are produced to exacting standards. We start with QUALITY STEEL that is precision welded, using heavy duty 1", 16 gauge square tubing in the base, and 5/8" cross bracing.

## **TRUE Mandrel Tube Bending**

The ChurchPlaza Standard is to build the strongest chairs possible! We use mandrel bending for the steel used in our chair frames. In that way, the excess material from the bend is channeled to the inside of the curve to provide a smooth, even, and strong bend. There is no crushing to compromise the integrity of the steel, thus insuring your church of a quality chair that will support you for a lifetime.

## **Quality in Design**

Mandrel bending is only part of the story. The design of the frame is what is really noteworthy. We actually use multiple frame designs for ChurchPlaza Sanctuary Seating chairs (not like others who save money by using one frame design for all applications) with each designed for a specific application. All Sanctuary Seating frames have tubular cross bracing between the legs and not simply welded rods. This provides the ultimate support and strength and contributes to the design of the frame to exceed BIFMA standards.

## **Trustworthy Warranty**

The industry's most comprehensive and trustworthy seating warranty from those who have earned the endorsements and recommendations of 47 national denominations, fellowships, ministries, and/or their publishing houses. Be sure to read the fine print and compare with other chair providers.

## **Built to Exceed BIFMA Standards**

ChurchPlaza chairs are built to exceed the rigorous standards set by the Business and Furniture Manufacturers Association (BIFMA). You can feel confident that your chairs are going to continue to look good, even after rigorous use.

## **Frame Finish**

Scratch Resistance is the benefit of our 8-Step Electrostatic painting process, known as "Powder Coating." The paint used in ChurchPlaza chairs electronically bonds to the metal for a superior and durable finish. This is the same process used in automotive painting. It resists scratching, chipping and peeling so your chairs will retain their "like new" look over many years of use.

**Foam Comfort: Two Are Better Than One**

Our quality engineered dual layer foam construction has re-vitalized seating comfort and added to the life expectancy of our foam seats. The top layer of high density virgin polyurethane foam provides luxurious plush comfort. The base layer of durable foam provides durability and support, preventing bottoming out on the seat foundation. All the foam in ChurchPlaza seating is top quality, high density virgin foam and not recycled or re-manufactured foam. Comfort beyond expectation!

**Better Built 1/2" Industrial Grade Plywood Foundation**

Our chair's quality foundation are a key to providing the ultimate in support and durability for the life of the chair. ChurchPlaza's quality CARB 2 certified plywood is resistant to cracking and unwanted flexing found in less expensive particle board or manufactured plywood, known as Strandboard, OSB and Multi-ply. Seats and backs are attached using Stafast™ T-Nuts, not wood screws or metal-to-plastic dashboard fasteners, to insure a positive secure anchor to the frame. Stafast™ T-Nuts provide positive steel-to-steel contact and prevent screws from working loose and falling out.

**Lumbar Back Support System**

The ChurchPlaza collection of sanctuary chairs are available in multiple back designs. Our Back Support Systems are designed to provide the optimum comfort for the upper back area, additional support for the lumbar area and superior support for the back. Lumbar support is standard on all ChurchPlaza sanctuary chairs; this is accomplished by inserting extra foam in the lumbar area. To enhance the comfort, the back is designed in two sections. The upper section has 1 1/2" of foam plus 3/4" of added foam in the lumbar area and the lower section of the back foam is cut away, providing extra gentle pressure in the lumbar area of the back while also giving additional seat room. Comfort without compromise.

**Highest Quality and Safest Fabrics**

ChurchPlaza sanctuary chairs are upholstered with only the highest grade and safest commercial fabrics from quality mills. These mills have been selected to produce fabrics for the finest quality manufacturers of furniture and the automotive industry. Their quality control is the highest in the fabric industry. The fabric we recommend as our standard exceeds the commercial grade surface abrasion test known as the Wyzenbeek test and is also MAS safety certified to be safe from dangerous carcinogenic chemical emissions. Heavy duty is rated at 15,000 double rubs; our choices can exceed 150,000 double rubs. The Break Strength test (ASTM-D-1682) normal is 50 lbs. while our tests to 276 lbs. The tear resistance is almost 50 lbs., when the standard is 6 lbs. (ASTM-D-2262). All fabrics meet Cal 117 fire code. Our fabric will continue to keep its appearance for years to come. Expansion in the future with additional chairs will continue to match the original in color and good looks. All our fabrics come with MoistureBarrier Fabric treatment at no additional cost to protect your chairs and foam from spills and accidents. Contact our representatives for a FREE fabric card.

**The ChurchPlaza Warranty**

Our Trustworthy Stackable Seating Warranty is the industry's most comprehensive and includes:

- 25 year frame guarantee
- 25 year structural seat and back warranty
- 10 year foam warranty
- 10 year fabric limited warranty wear protection
- 5 year seam warranty

***The world's highest quality church seating...  
from people you can trust!***

*Trusted for more than 35 Years*



## Generation Series

**Call for your no-obligation quote today!**

**Introducing the Generation Series, a versatile line of commercial-grade furniture crafted to enhance your church's environment beyond traditional seating. From durable folding chairs to elegant banquet tables, this expanded offering provides quality solutions for various church activities. Designed to withstand regular use while maintaining aesthetic appeal, the Generation Series empowers churches to create inviting and adaptable spaces for worship, fellowship, and community events.**

Folding chairs give your church the flexibility to adjust the seating capacity in any setting. Choose from steel, plastic/resin, wood, padded/upholstered and a variety of style and color configurations (even personalized options.)

### Steel Chairs



Standard Steel



Premium Double Hinge



Premium Triple Brace



Fanback Polyfold

### Padded Chairs



Premium Vinyl



Premium Fabric



2" Thick Padded

### Plastic Chairs

Folding



Premium Plastic Lightweight



Lightweight Blow Molded

Standard



Ultra-Stacker Multi-use



Cafetorium Multi-use

*Trusted for more than 35 Years*

## Generation Series

**Call for your no-obligation quote today!**

Folding tables in wood, plastic and laminate finishes as well  
as round, rectangular and serpentine options in all key sizes.

### Blow Molded



### Laminate Top



### Lightweight



### Trucks



### Tables



Farmhouse



Farmhouse Benches



Folding Picnic



Kid's Folding Picnic

This is just a sample of the offering. For additional options, call us.

**This is just a sampling of the offering. For additional options, call us.**

*Trusted for more than 35 Years*

## Pulpits and Lecterns

**Contemporary styling and beautifully crafted, these unique pulpits are sure to add a touch of warmth to your church or sanctuary.**

### Our Value Priced Pulpits



Evangel Pulpit



Messenger Pulpit



Advocate Pulpit

These pulpits are beautifully crafted solid northern red oak and acrylic. Each has a unique shaped leg design. The podiums are made with a durable 1/2" acrylic top and a 3/8" acrylic face glass. Order with your church or denomination logo, or choose from a variety of standard images that look etched in the panel. All are 40" tall at paper rail or can be custom altered to fit you. Available in a variety of stain colors.



Tribute Pulpit



Cross Pulpit



Messenger and Evangel  
Baptismal

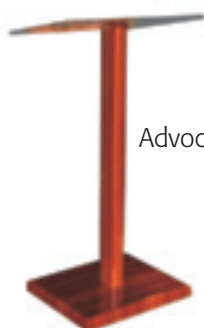


Tithe Box on Casters

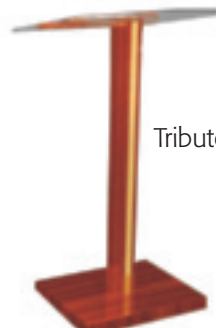
### Lecterns



Messenger Evangel



Advocate



Tribute



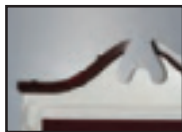
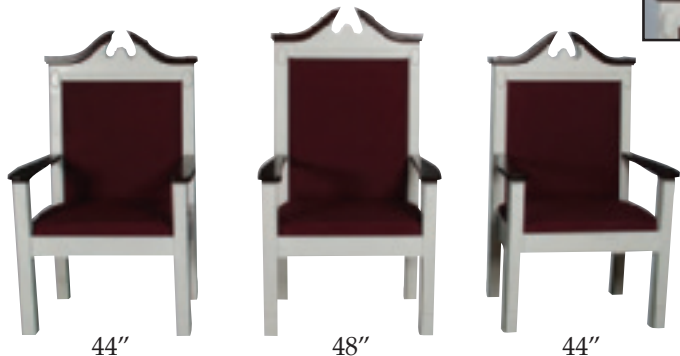
Cross

*Trusted for more than 35 Years*



**Custom Hand-Crafted Traditional Church Furniture with a wide assortment of wood stains and fabric options. Groupings sold individually to better serve your needs.**

**NO. 8200 PULPIT CHAIRS, TWO-TONE**  
27" W, 21" D



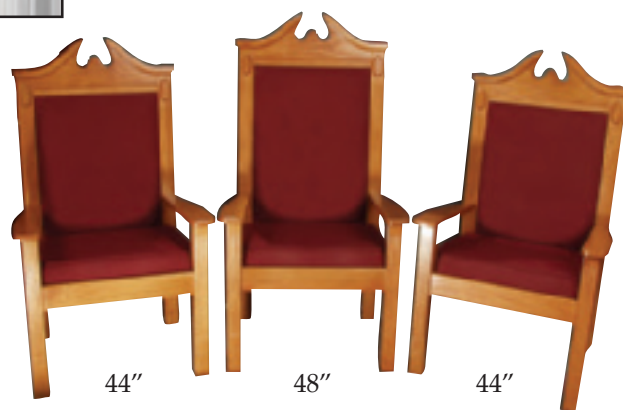
**NO. 8201 PULPIT**  
36" W,  
24" D,  
46" H  
16" X 20"  
Adjustable  
Bible Rest



**NO. 8201 FLOWER STAND**  
14" x 14" x 32" H

**NO. 8201 COMMUNION TABLE**  
60" W x 24" D x 32" H

**NO. 8201 FLOWER STAND**  
14" x 14" x 32" H



**NO. 8200 PULPIT CHAIRS, ALL-STAINED**  
27" W, 21" D



**NO. 8201 ALL-STAINED PULPIT**  
Adjustable Bible Rest telescopes  
up and down.



**NO. 8201 COMMUNION TABLE, ALL-STAINED**  
60" W x 24" D x 32" H

**Please visit our website at [www.churchplaza.com](http://www.churchplaza.com) for more pulpit furniture choices or contact your sales representative at 800-927-6775.**

*Trusted for more than 35 Years*



## ChurchPlaza Financing Services

*Program administered by Hampton Ridge Financial Services.*

### Quality Products For Your Church

ChurchPlaza has been a leading national provider of quality seating and other quality capital equipment and services to America's churches for more than 35 years. During that time we've earned the endorsements and recommendations of 47 national denominations, ministries and/or their publishing houses. Quality products and services - at affordable prices - from people your church can trust. That's ChurchPlaza!

### Quick Easy Affordable Financing

Financing allows churches to get the seating they need without delay and redirect resources to other ministry needs. Churches rely on a multitude of equipment to run day-to-day operations, such as seating, security systems, copiers/printers, telephone systems and office furniture to audio, video and lighting equipment that is vital for their worship and praise services.

When you need the proper seating and equipment to support your ministry, time can be critical. Hampton Ridge Financial Services works with 1000s of churches across the country. This allows HRF to provide proven financing options, so your church can best fulfill your ministry's needs.

### Additional Benefits of Leasing

- Redirect resources to other ministry needs.
- Simple application and approval process.
- Quick turnaround times on Credit Applications.
- Fixed monthly payments throughout term.
- Trade up to new equipment.
- Competitive lease rates.

**Visit us at [www.churchplaza.com](http://www.churchplaza.com) for financing information.**

*Trusted for more than 35 Years*



# ChurchPlaza®

America's Church Resource  
A Christian Workplace Company

*Trusted for more than 35 Years*

**[www.churchplaza.com](http://www.churchplaza.com)**

Your Online Resource for Church Products, Information and Resources.

ChurchPlaza.com allows you to research and plan your purchases of the very finest products for your church use. The website features the company's best selling products and services in a comprehensive, searchable format. ChurchPlaza.com allows you to make decisions at your leisure and with the entire committee participating. For additional assistance we are ready with trained Sales Representatives to help you complete your order and answer any questions you may have. Call or E-mail us today.

The ChurchPlaza Companies, Inc.  
The ChurchPlaza Building  
1725 Barber Road • Sarasota, Florida 34240  
941-927-3377  
1-800-927-6775